

A Family Community with everything you always wanted



all of the amenities at
AFFORDABLE RENTS

Many families don't know that they can qualify for a spacious affordable apartment at Timberlake Village Apartments.

Our affordable rents are designed to provide beautiful quality apartments that meet the needs of families on a limited income.

Call our office today for a personal tour and find out if you may qualify for a 2, 3 or 4 bedroom apartment at Timberlake Village Apartments.

Please call our office today
for more details.
208-736-4900

Where the scenic Snake River meets fertile farm ground, the city of **Twin Falls** has long been the center of commerce and entertainment for eight counties of south-central Idaho

The canyons, however, are the pride of Twin Falls. Scenic in-town walking trails wind along the floor of the intimate Rock Creek Canyon and the rim of the mighty Snake River Canyon. Accessed from a park beneath the magnificent arches of the Perrine Bridge, the Centennial Park Trail is a quick way to enjoy the canyon's astonishing scenery and abundant wildlife as you follow a long stretch of undeveloped riverbank. Fishing, golfing and swimming attractions line the Snake River Canyon at Twin Falls' north edge. From there, walkers with extra energy and a taste for urban wilderness can choose a trail ascending from the park to the canyon rim above, or one circling nearby Dierke's Lake.



Find your home in Twin Falls at
Timberlake Village Apartments



Timberlake
Village

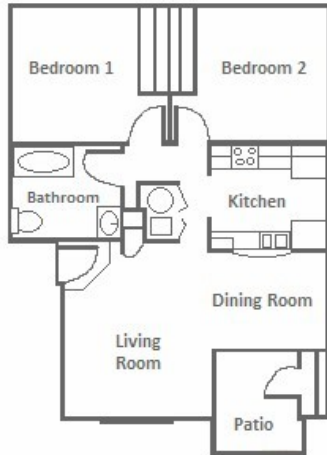
176 Meadowview Lane
Twin Falls ID 83301
208-736-4900

Rent Affordable
2, 3 & 4 Bedroom Apartments

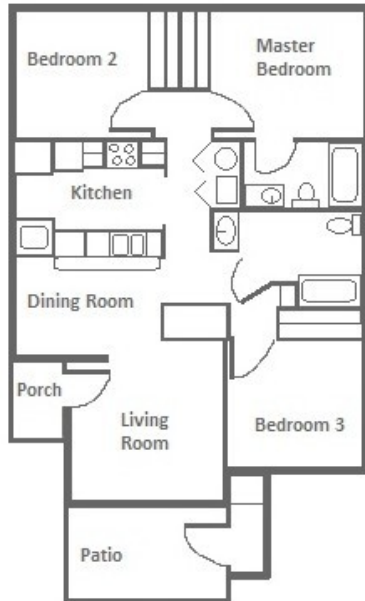
A Somerset Pacific LLC Managed Property



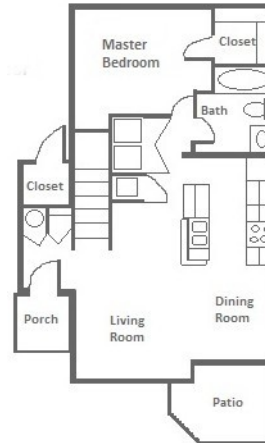
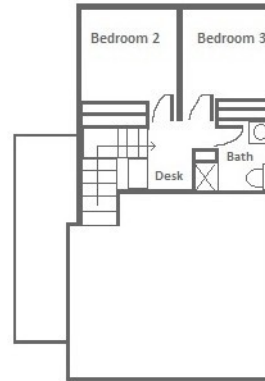
TWO BEDROOM/ONE BATH 800 SQFT



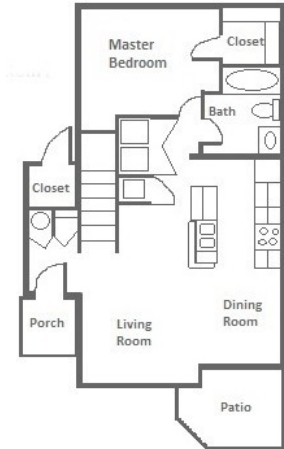
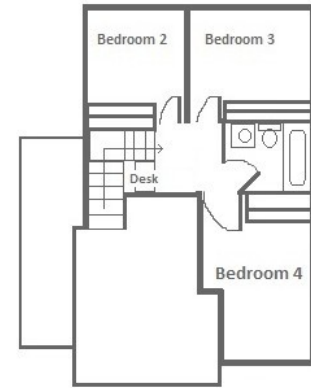
THREE BEDROOM /TWO BATH 1200 SQFT



THREE BEDROOM /TWO BATH 1200 SQFT



FOUR BEDROOM /TWO BATH 1350 SQFT



Apartment Amenities

- Large Bright Rooms
- Spacious Design
- Energy Star Appliances
- Washer & Dryer in Unit
- Balcony/Patio
- Ceiling Fans
- Private Lockable Storage
- Efficient A/C & Heating
- Cable & Phone Ready
- No Charge for Water Service
- No Charge for Trash Removal

Community Amenities

- Beautifully Landscaped
- Off Street Parking
- Guest Parking
- Fitness Center
- Community Activity Room
- Computer Center
- Picnic/BBQ Areas
- Playground
- Handicap Accessible
- On Site Management
- 24 Hour Emergency Maintenance